

Media and Printer Settings

The C911/C931/C941 offer tremendous flexibility in media support. To obtain the best results, it may be necessary to adjust a few key printer settings. The following table and instructions provide recommended printer settings for a range of paper stocks. If your media is not listed, try applying the printer settings shown for a media that has a similar weight and finish.

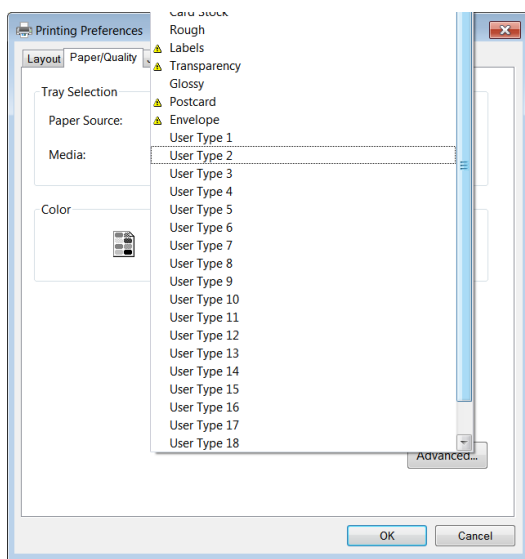
Media and Media Characteristics					Printer Settings	
Brand	Finish	Weight lbs (g/m)	Paper Type	Caliper (pt)	Setting (A) Media Type	Setting (B) Media Weight
ROYAL SUNDANCE™ Papers	Fiber Digital	70 (104)	Text	5.3	Plain	Medium
Hammermill Digital Color Copy	Extra Smooth	70 (105)	Text	4.7	Plain	Medium Heavy
UV/ULTRA® II Papers	Smooth Digital	28 (105)	Bond	4.4	Plain	Medium
CLASSIC CREST® Papers	Eggshell Digital	80 (118)	Text	7	Rough	Medium Heavy
CLASSIC CREST® Papers	Smooth Digital	80 (118)	Text	5.8	Plain	Medium Heavy
CLASSIC® Linen Papers	Linen Digital	80 (118)	Text	6.6	Plain	Medium Heavy
ENVIRONMENT® Papers	Smooth Digital	80 (118)	Text	6	Plain	Medium Heavy
ESSE® Papers	Smooth Digital	80 (118)	Text	5.2	Plain	Medium Heavy
ROYAL SUNDANCE™ Papers	Smooth Digital	80 (118)	Text	5.8	Plain	Medium Heavy
Hammermill Digital Color Copy	Extra Smooth	80 (120)	Text	5.4	Plain	Medium Heavy
Hammermill Digital Cover Paper	Smooth Digital	60 (162)	Cover	6.5	Plain	Ultra Heavy 1
ASTROBRIGHTS® Papers	Smooth Digital	65 (176)	Cover	9.3	Plain	Ultra Heavy 1
ROYAL SUNDANCE™ Papers	Fiber Digital	80 (216)	Cover	10.8	Rough	Ultra Heavy 2
ROYAL SUNDANCE™ Papers	Smooth Digital	80 (216)	Cover	10.2	Rough	Ultra Heavy 2
CLASSIC CREST® Papers	Smooth Digital	80 (216)	Cover	10.5	Plain	Ultra Heavy 3
ROYAL SUNDANCE™ Papers	Smooth Digital	100 (270)	Cover	12.8	Rough	Ultra Heavy 4
EAMES™ Paper Collection	Vellum Digital	100 (270)	Cover	15	Plain	Ultra Heavy 4
NEENAH® Color Copy Papers	Super Smooth	100 (270)	Cover	11.5	Plain	Ultra Heavy 4
Hammermill Digital Cover Paper	Smooth Digital	100 (271)	Cover	10.5	Plain	Ultra Heavy 4
ESSE® Papers	Smooth Digital	105 (284)	Cover	12.2	Rough	Ultra Heavy 4
CLASSIC® Linen Papers	Linen Digital	115 (311)	Cover	15.6	Rough	Ultra Heavy 4
CLASSIC CREST® Papers	Smooth Digital	130 (352)	Cover	15.6	Rough	Ultra Heavy 5
Relyco® Revlar™ Waterproof	Digital - Laser		Synthetic	3.7–14.7	Transparency	Printer Setting

Note: When using Transparency as the media type, or Ultra Heavy 5 as the media weight, the “Face-Up” output bin must be used.

How to set the Media Type and Media Weight Settings (A) & (B)

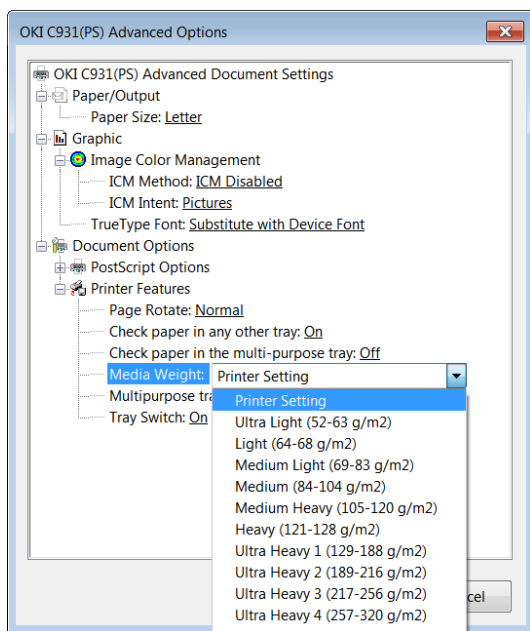
Using Windows PS printer drivers

- 1 Open a document file.
- 2 Select [Print] in [File] menu.
- 3 Click [Printer Properties] ([Properties]/[Settings]/[Preferences]).
- 4 Select [Paper/Quality] tab.
- 5 Select a desirable setting in [Media] according to the table.



- 6 Click [Advanced...] button in [Paper/Quality] tab.

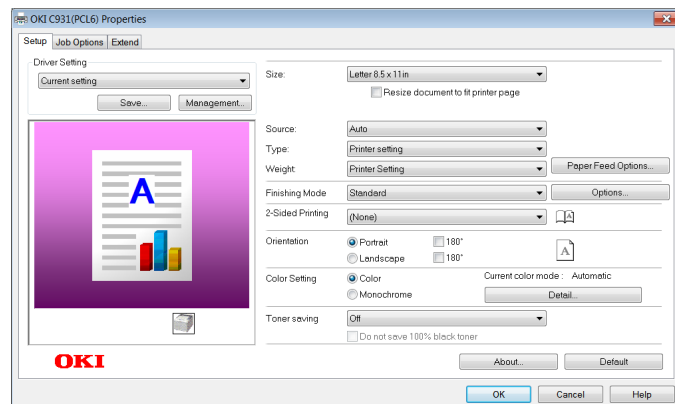
- 7 Click [Media Weight] and ▼ button. Media weight selections appear.



- 8 Select a desirable weight according to the table and press [OK].

Using Windows PCL printer drivers

- 1 Open a document file.
- 2 Select [Print] in [File] menu.
- 3 Click [Printer Properties] ([Properties]/[Settings]/[Preferences]). Properties screen appears.
- 4 Select [Setup] tab.

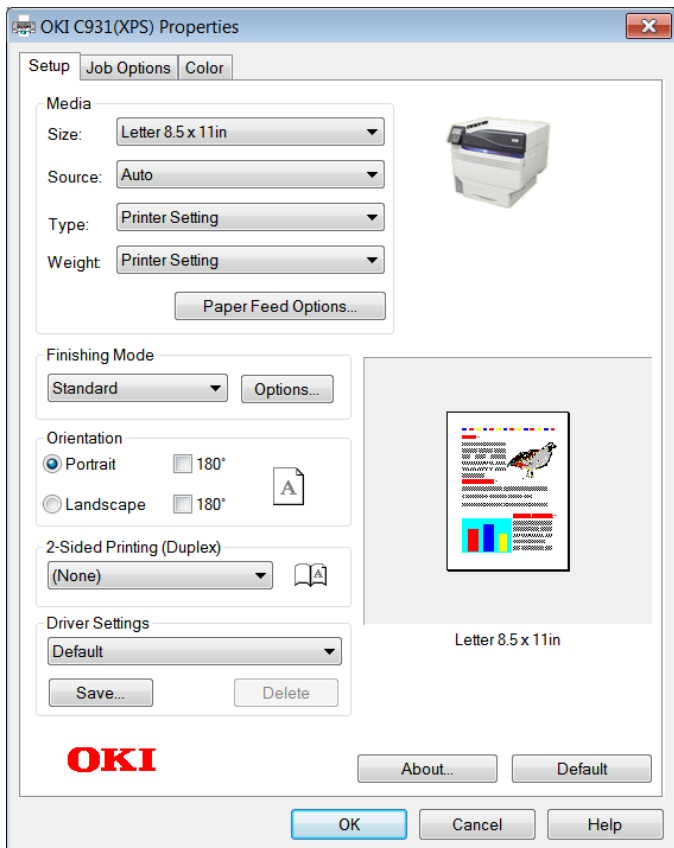


- 5 Select a desirable setting in [Type] according to the table.

- 6 Select a desirable setting in [Media Weight] according to the table.

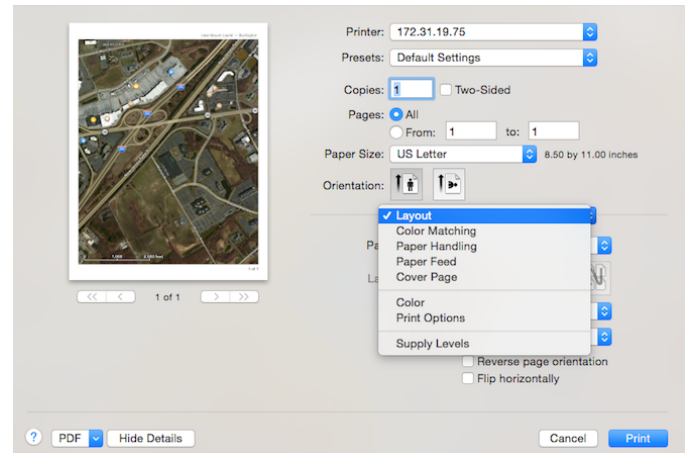
Using Windows XPS printer drivers

- 1 Open a document file.
- 2 Select [Print] in [File] menu.
- 3 Click [Printer Properties] ([Properties]/[Settings]/[Preferences]). Properties display appears.
- 4 Select [Setup] tab.

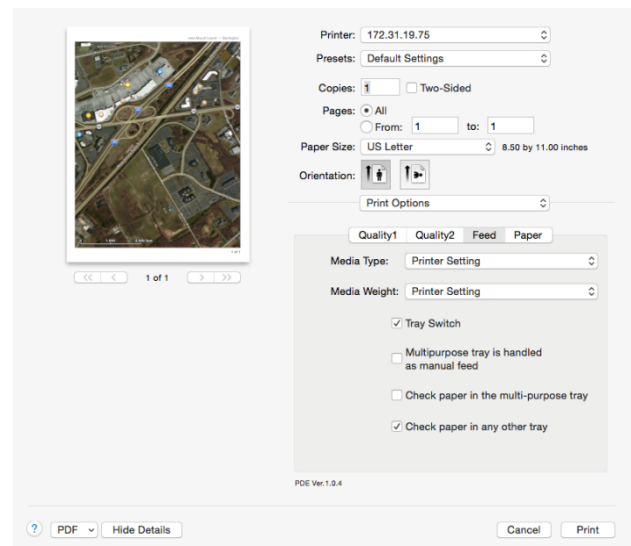


Using Mac OS X printer drivers

- 1 Open a document file.
- 2 Select [Print..] in [File].
- 3 Click ▼ button of the box below [Orientation]. Following display appears.



- 4 Select [Print Options] and then [Feed]. Following screen appears.



- 5 Select a desirable setting in [Media Type] according to the table.

- 6 Select a desired setting in [Media Weight] according to the table.

- 5 Select a desirable setting in [Type] according to the table.

- 6 Select a desirable setting in [Weight] according to the table.

Additional Adjustments

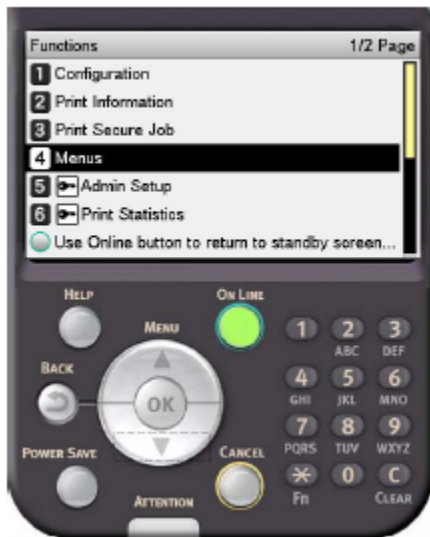
Depending on the media and environmental conditions such as temperature and humidity, additional fine-tuning may be required. In that case, try changing the "Paper Color Setting" at the printer's operator panel (as shown below).

If the problem persists, contact OKI Customer Support.

Operation panel on the printer



1 Press scroll button ▲ or ▼ to display [Functions]. Following display appears.



2 Select [Menus], and press [OK]. Following display appears.



3 Select [Print Adjust], and press [OK].

4 Select [Paper Color Setting] and press [OK]

The display may show:

Paper Color Setting

✓0

(-3 - +3)

5 Adjust the value using ▲ or ▼.

6 Press [OK]. Make sure ✓ appears next to your selection.

Notes

If the Media Type is set for Transparency, follow the previous instructions, but modify the value for [Trans Color Setting].

Additional Reading

Information regarding media settings can be found in the following sections of the "Advanced" User Manual:

- "Printer driver functions table"
- "Printing on various papers,"
- "Table of setting items in the device setup screen"